

kSA Pulse Control



The kSA Pulse Control kit is a pulse generator and pulse counter system. The kit is designed as a simple, inexpensive, programmable pulsed waveform source for triggering events and instrumentation. A common use of the Pulse Control kit is in Pulsed Laser Deposition (PLD), whereby the laser pulse rate and number of pulses is controlled through the Pulse Control kit. Any application that needs a triggered or timed input can make use of kSA Pulse Control.

kSA Pulse Control makes use of a PCI-based 9513 counter/timer module and easy-to-use Windows NT/2000/XP software to allow the user to generate square waves of any frequency in the range of 0.00077 Hz to 500.00 kHz. Pulse trains of a user-specified number of pulses may also be generated, real-time counted and displayed. Pulse trains can also be paused and resumed per the user's discretion. The pulses are TTL-level and are true square wave. The kSA Pulse Control software is easy to use, with a single dialog box for entering all the parameters needed for pulse generation.

Kit Includes:

- PCI counter/timer board based on 9513 counter/timer chip.
- Windows NT/2000/XP compatible control software.
- 20' Data interface cable.

Input Parameters:

Frequency

This parameter controls the frequency of the square wave pulse. Allowable range is from 0.00077 Hz to 500 kHz.

Pulse Count

Displays the number of pulses in real-time that have been generated since the start button was clicked. Maximum count of 32,767 pulses.

Pulse Form

Allows user to choose continuous mode or pulse train mode. Continuous mode produces a continuous square wave of the desired frequency from the time the start button is clicked until the stop button is clicked. Pulse train mode produces a pulse train with desired number of pulses. The pulses can be paused and resumed where it left off by clicking the pause/resume button.

Number of Pulses

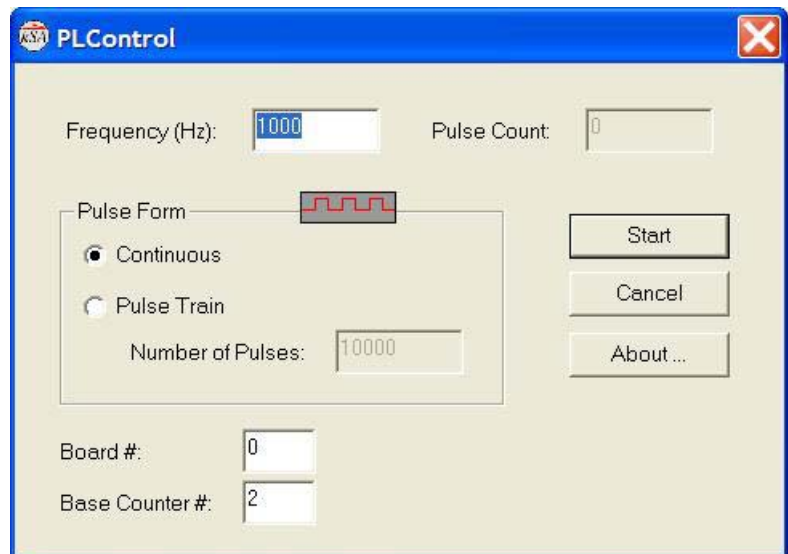
This parameter controls the number of pulses in a pulse train, up to 32,767.

Board

The PCI-based board number for the counter/timer board.

Base Counter

Allows you to select which counter on the board to use as a source. There are 5 counters on the CIO-CTR05 board.



kSA Pulse Control allows you to easily and inexpensively generate true square wave pulses, both continuous and pulse trains, of any frequency. Please call us for details or to receive a quotation.