
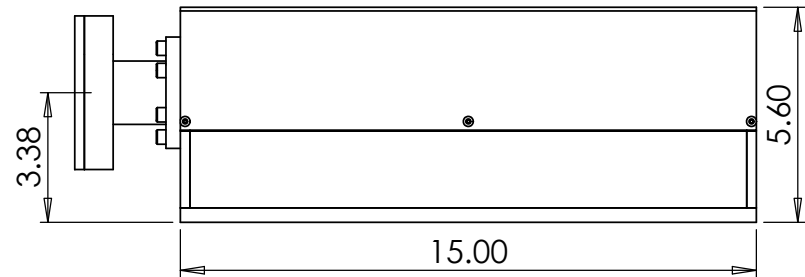
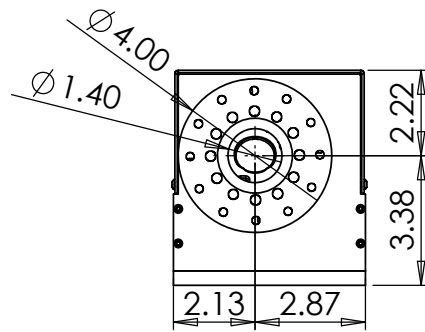
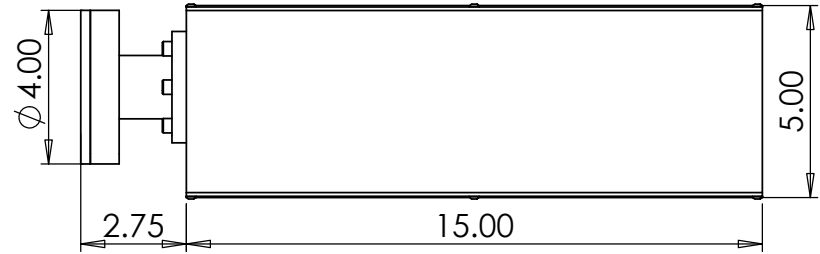
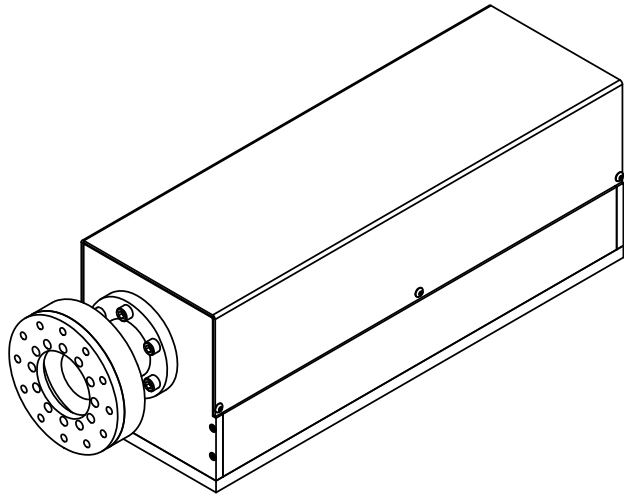


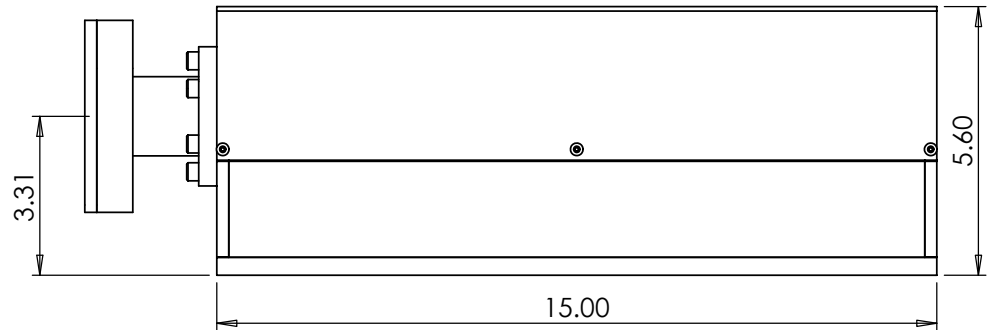
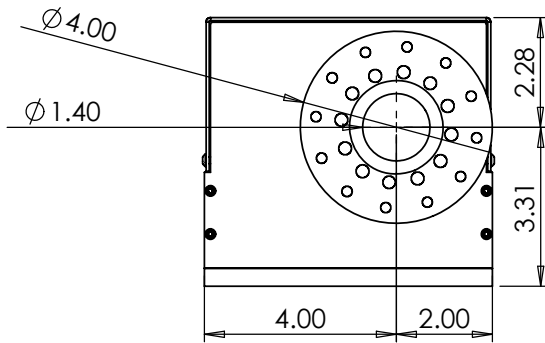
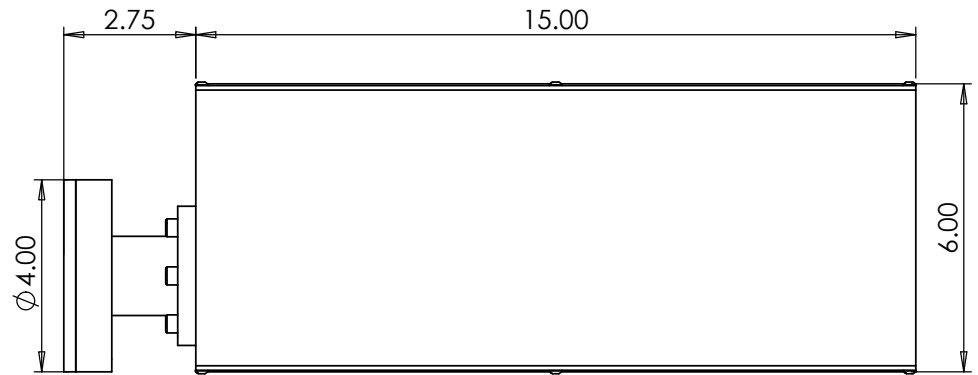
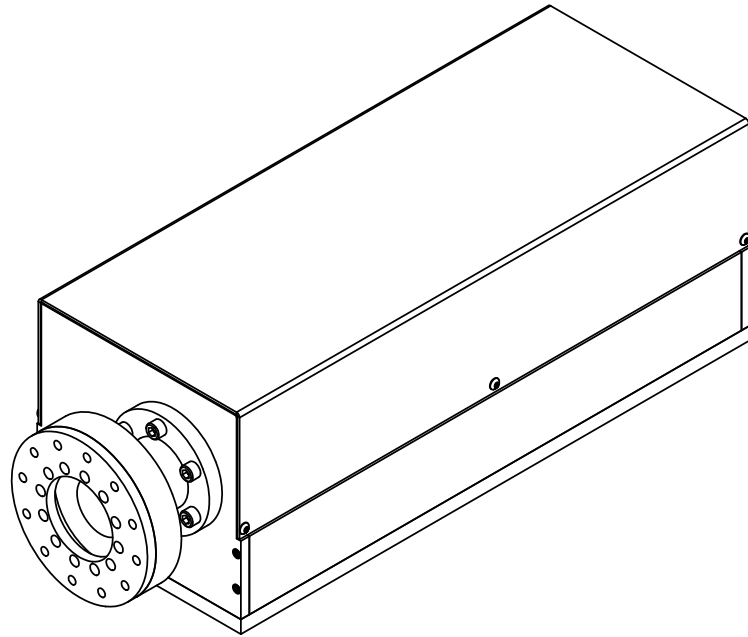
UNLESS OTHERWISE SPECIFIED:		NAME	DATE	k-space Associates 		
DIMENSIONS ARE IN INCHES		DRAWN	SJC			6/29/2006
TOLERANCES:		CHECKED				
FRACTIONAL ±		ENG APPR.				
ANGULAR: MACH ± BEND ±		MFG APPR.				
TWO PLACE DECIMAL ±		Q.A.			TITLE:	
THREE PLACE DECIMAL ±		Description				
INTERPRET GEOMETRIC TOLERANCING PER:		MOS Single Port Normal Incidence Optics		SIZE	DWG. NO.	
MATERIAL				A	M-SSP	
FINISH					REV	
DO NOT SCALE DRAWING				SCALE: 1:5	WEIGHT:	
					SHEET 3 OF 4	

PROPRIETARY AND CONFIDENTIAL
 THE INFORMATION CONTAINED IN THIS DRAWING IS THE SOLE PROPERTY OF k-space Associates. ANY REPRODUCTION IN PART OR AS A WHOLE WITHOUT THE WRITTEN PERMISSION OF k-space Associates IS PROHIBITED.



PROPRIETARY AND CONFIDENTIAL
 THE INFORMATION CONTAINED IN THIS DRAWING IS THE SOLE PROPERTY OF k-Space Associates. ANY REPRODUCTION IN PART OR AS A WHOLE WITHOUT THE WRITTEN PERMISSION OF k-Space Associates IS PROHIBITED.

UNLESS OTHERWISE SPECIFIED:		NAME	DATE	k-Space Associates		
DIMENSIONS ARE IN INCHES TOLERANCES: FRACTIONAL ± ANGULAR: MACH ± BEND ± TWO PLACE DECIMAL ± THREE PLACE DECIMAL ±		DRAWN	SJC			1/19/2007
INTERPRET GEOMETRIC TOLERANCING PER:		CHECKED			TITLE:	
MATERIAL		ENG APPR.				
FINISH		MFG APPR.				
DO NOT SCALE DRAWING		Q.A.				
		Description		SIZE	DWG. NO.	REV
		MOS Standard Two Port Laser Housing		A	M-STP-LH	4
				SCALE: 1:5	WEIGHT:	SHEET 1 OF 3




PROPRIETARY AND CONFIDENTIAL
 THE INFORMATION CONTAINED IN THIS DRAWING IS THE SOLE PROPERTY OF k-Space Associates. ANY REPRODUCTION IN PART OR AS A WHOLE WITHOUT THE WRITTEN PERMISSION OF k-Space Associates IS PROHIBITED.

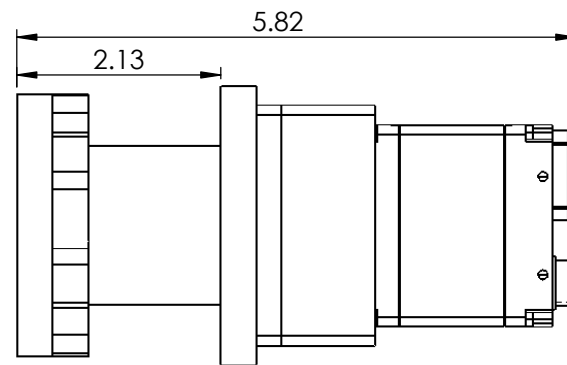
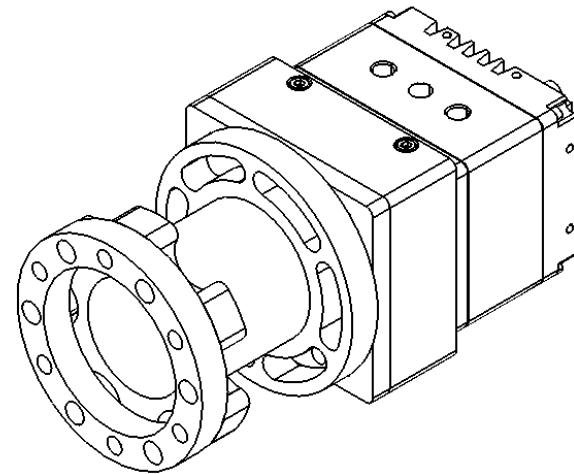
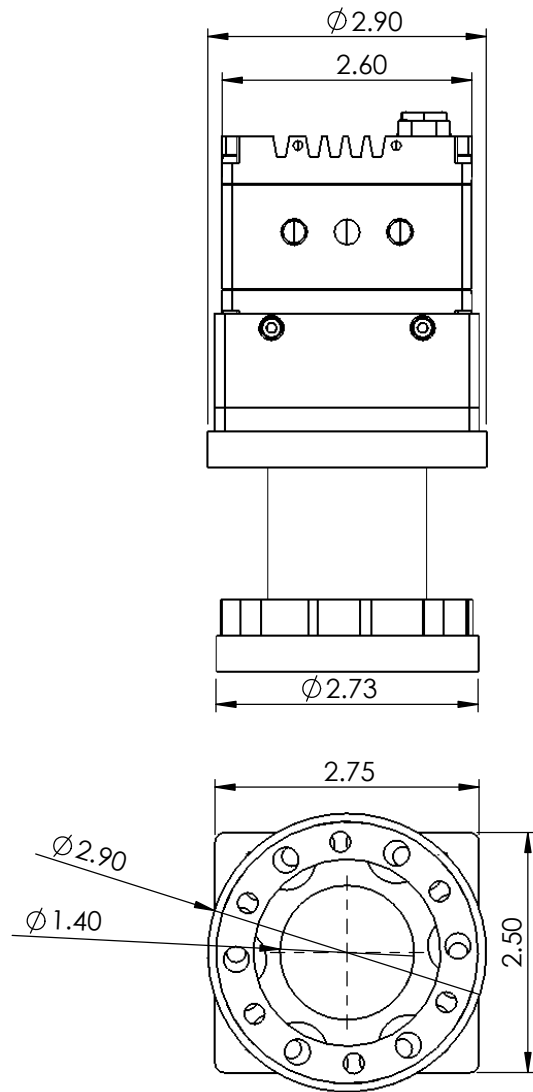
UNLESS OTHERWISE SPECIFIED:		NAME	DATE
DIMENSIONS ARE IN INCHES	DRAWN	SJC	12/12/2006
TOLERANCES:	CHECKED		
FRACTIONAL ±	ENG APPR.		
ANGULAR: MACH ± BEND ±	MFG APPR.		
TWO PLACE DECIMAL ±	Q.A.		
THREE PLACE DECIMAL ±	Description	MOS Standard Two Port Detector Housing	
INTERPRET GEOMETRIC TOLERANCING PER:			
MATERIAL	Aluminum 6061		
FINISH	Time Save		
DO NOT SCALE DRAWING			

k-Space Associates


TITLE:

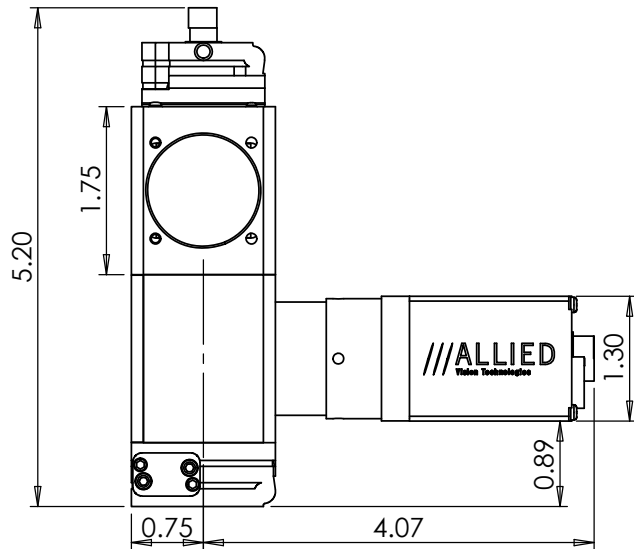
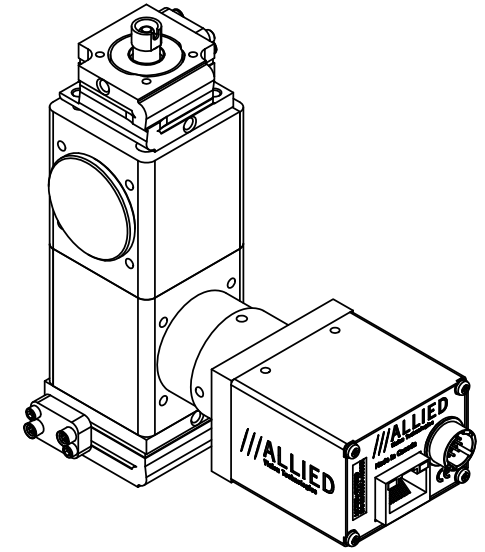
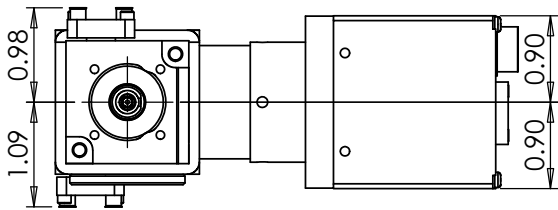


SIZE	DWG. NO.	REV
A	M-STP-DH	5
SCALE: 1:4	WEIGHT:	SHEET 1 OF 3




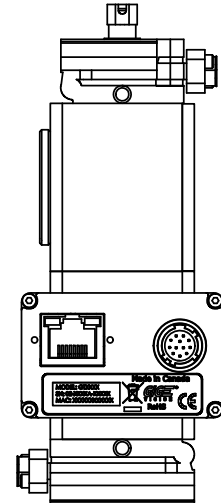
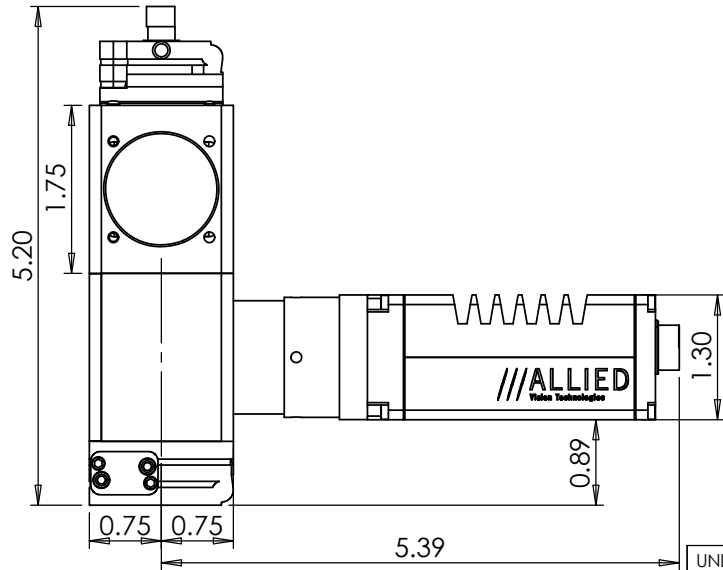
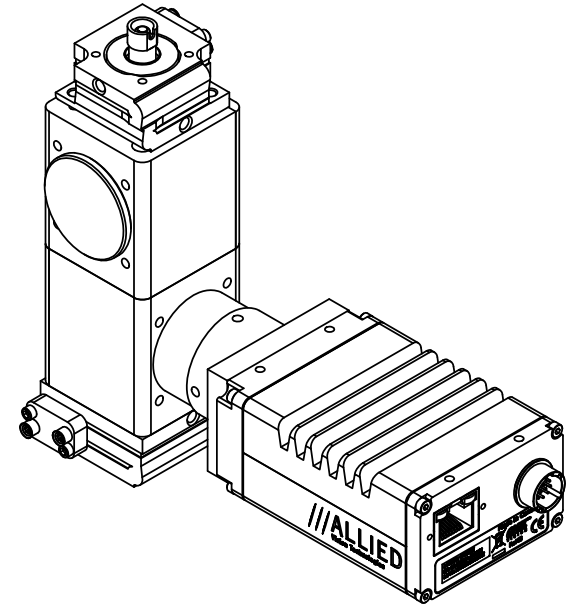
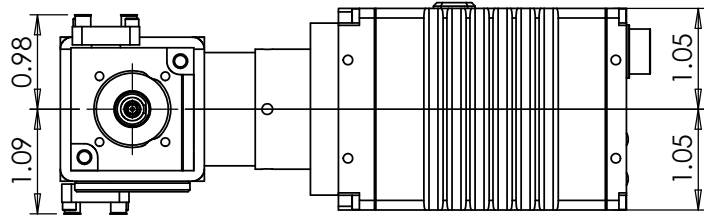
PROPRIETARY AND CONFIDENTIAL
 THE INFORMATION CONTAINED IN THIS DRAWING IS THE SOLE PROPERTY OF k-Space Associates. ANY REPRODUCTION IN PART OR AS A WHOLE WITHOUT THE WRITTEN PERMISSION OF k-Space Associates IS PROHIBITED.

UNLESS OTHERWISE SPECIFIED:		NAME	DATE	k-Space Associates							
DIMENSIONS ARE IN INCHES		DRAWN	SJJ			6/29/2006					
TOLERANCES:		Last Updated	sandhya	8/20/2019	TITLE:						
FRACTIONAL ±											
ANGULAR: MACH ±0.01 END ±0.1											
TWO PLACE DECIMAL ± 0.01											
THREE PLACE DECIMAL ± 0.002					<table border="1"> <tr> <td>SIZE</td> <td>DWG. NO.</td> <td>REV</td> </tr> <tr> <td>A</td> <td>M-2P-35-D</td> <td>01</td> </tr> </table>	SIZE	DWG. NO.	REV	A	M-2P-35-D	01
SIZE	DWG. NO.	REV									
A	M-2P-35-D	01									
INTERPRET GEOMETRIC TOLERANCING PER:	Description		SCALE: 1:2		WEIGHT:						
MATERIAL	MOS Detector, 35mm Camera, No Servo, Directly mounted to Viewport with Nipple		SHEET 1 OF 1								
6061 Aluminum											
FINISH											
DO NOT SCALE DRAWING											



PROPRIETARY AND CONFIDENTIAL
 THE INFORMATION CONTAINED IN THIS DRAWING IS THE SOLE PROPERTY OF k-Space Associates. ANY REPRODUCTION IN PART OR AS A WHOLE WITHOUT THE WRITTEN PERMISSION OF k-Space Associates IS PROHIBITED.

UNLESS OTHERWISE SPECIFIED:		NAME	DATE	k-Space Associates 		
DIMENSIONS ARE IN INCHES		DRAWN	SJJ			7/22/2014
TOLERANCES:		CHECKED				
FRACTIONAL ±		ENG APPR.				
ANGULAR: MACH ± BEND ±		MFG APPR.			TITLE: ICE-MOS-1D-GC1380	
TWO PLACE DECIMAL ±		Q.A.				
THREE PLACE DECIMAL ±		Description		SIZE A	DWG. NO. ICE-MOS-1D-GC1380	
INTERPRET GEOMETRIC TOLERANCING PER:		Modular Curvature Assembly		SCALE: 1:2	WEIGHT:	
MATERIAL Aluminum 6061				SHEET 3 OF 4	REV 06	
FINISH						
DO NOT SCALE DRAWING						




PROPRIETARY AND CONFIDENTIAL
 THE INFORMATION CONTAINED IN THIS DRAWING IS THE SOLE PROPERTY OF k-Space Associates. ANY REPRODUCTION IN PART OR AS A WHOLE WITHOUT THE WRITTEN PERMISSION OF k-Space Associates IS PROHIBITED.

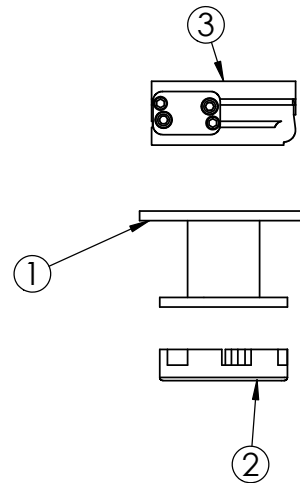
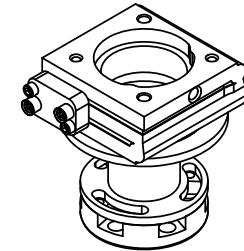
UNLESS OTHERWISE SPECIFIED:
 DIMENSIONS ARE IN INCHES
 TOLERANCES:
 FRACTIONAL ±
 ANGULAR: MACH ± BEND ±
 TWO PLACE DECIMAL ±
 THREE PLACE DECIMAL ±

INTERPRET GEOMETRIC TOLERANCING PER:
 MATERIAL Aluminum 6061
 FINISH
 DO NOT SCALE DRAWING


	NAME	DATE
DRAWN	SJJ	7/22/2014
CHECKED		
ENG APPR.		
MFG APPR.		
Q.A.		
Description		
Modular Curvature Assembly		

k-Space Associates		
		
SIZE	DWG. NO.	REV
A	ICE-MOS-1D-GT3300M	06
SCALE: 1:2	WEIGHT:	SHEET 4 OF 4

ITEM NO.	PART NUMBER	DESCRIPTION	10 Neck/QT Y.
1	CF-075-FM10	1.33" Flange Mount - 1.0" Long	1
2	AP-00032	Mounting Ring for 1.33" CF Viewport with Threads Internal	1
3	ixf1_0ti1	Stainless Steel Top Drive 1" Kinematic Mirror Mount	1



PROPRIETARY AND CONFIDENTIAL
 THE INFORMATION CONTAINED IN THIS DRAWING IS THE SOLE PROPERTY OF k-Space Associates. ANY REPRODUCTION IN PART OR AS A WHOLE WITHOUT THE WRITTEN PERMISSION OF k-Space Associates IS PROHIBITED.

UNLESS OTHERWISE SPECIFIED:		NAME	DATE	k-Space Associates		
DIMENSIONS ARE IN INCHES		DRAWN	DJG			1/13/2014
TOLERANCES:		CHECKED			TITLE: 	
FRACTIONAL ±		ENG APPR.				
ANGULAR: MACH ± BEND ±		MFG APPR.				
TWO PLACE DECIMAL ±		Q.A.				
THREE PLACE DECIMAL ±		Description		SIZE	DWG. NO.	REV
INTERPRET GEOMETRIC TOLERANCING PER:		Mounting hardware for a 1.33" CF with a 1.0ixf Tilt Mount		A	1_33 Mounting Assembly	08
MATERIAL	Aluminum 6061			SCALE: 1:2	WEIGHT:	SHEET 1 OF 1
FINISH						
DO NOT SCALE DRAWING						

5

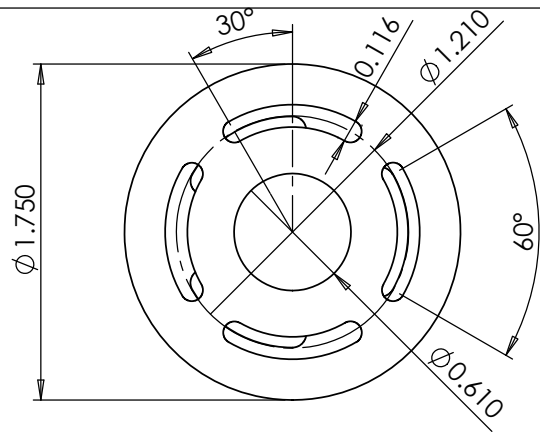


4

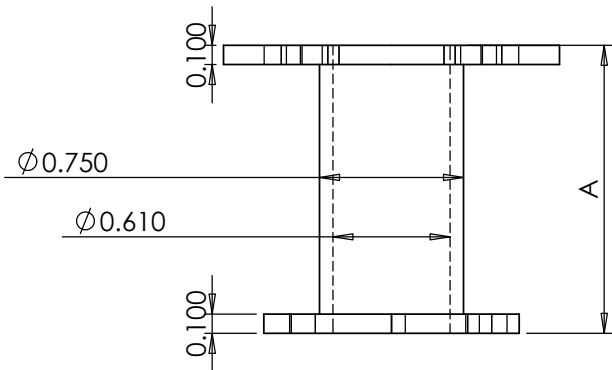
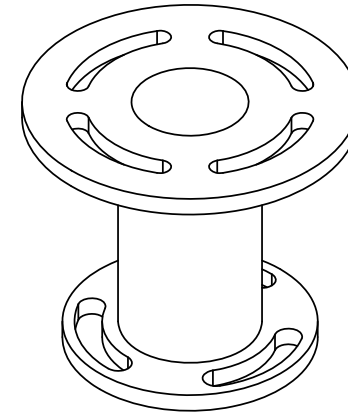
3

2

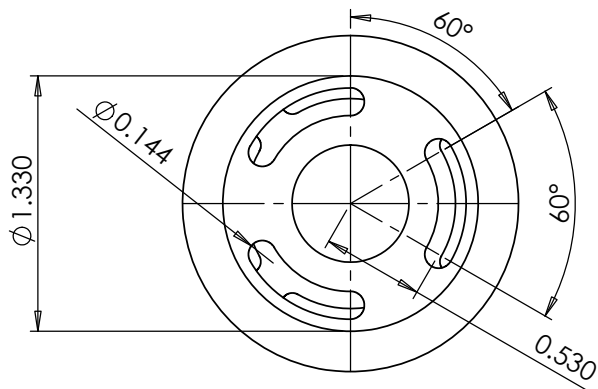
1



4X EQUALLY SPACED
4-40 CLEARANCE SLOTS




DIMENSION	CONFIGURATION/PN	LENGTH
A	CF-075-FM10	1.0"
A	CF-075-FM15	1.5"
A	CF-075-FM20	2.0"
A	CF-075-FM25	2.5"
A	CF-075-FM35	3.5"



4X EQUALLY SPACED
6-32 CLEARANCE SLOTS
OFFSET FROM TOP SLOTS
BY 30°

PROPRIETARY AND CONFIDENTIAL
THE INFORMATION CONTAINED IN THIS DRAWING IS THE SOLE PROPERTY OF k-Space Associates. ANY REPRODUCTION IN PART OR AS A WHOLE WITHOUT THE WRITTEN PERMISSION OF k-Space Associates IS PROHIBITED.

UNLESS OTHERWISE SPECIFIED:		NAME	DATE	k-Space Associates		
DIMENSIONS ARE IN INCHES		DRAWN	DJG 9/5/2012			
TOLERANCES: ANGULAR: MACH ±0.5 BEND ±1 TWO PLACE DECIMAL ±0.02 THREE PLACE DECIMAL ±0.005		CHECKED		TITLE:		
INTERPRET GEOMETRIC TOLERANCING PER:		ENG APPR.				
MATERIAL Aluminum 6061		MFG APPR.				
FINISH		Q.A.		SIZE	DWG. NO.	REV
DO NOT SCALE DRAWING		Description Flange Mount for 1.33" CF Viewport		A	CF-075-FM	06
				SCALE: 1:1	WEIGHT:	SHEET 1 OF 1