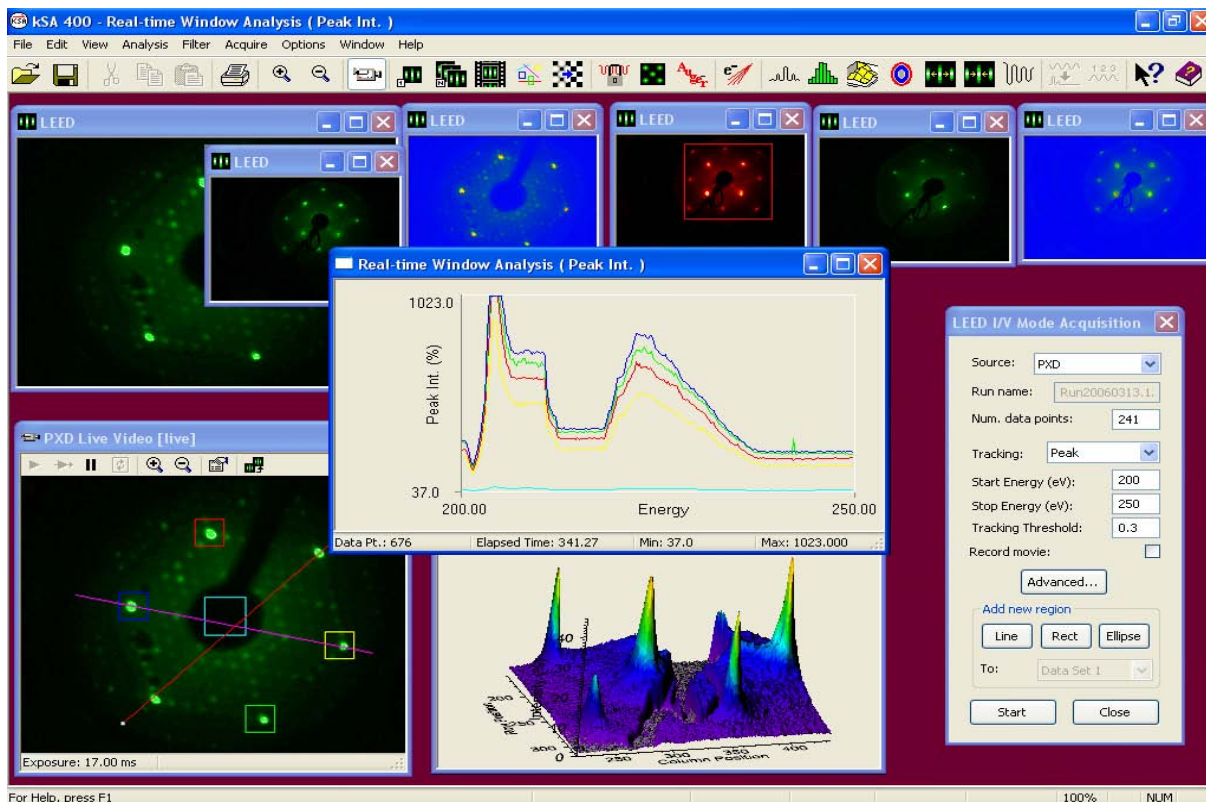


LEED IV



The kSA 400 is ideal for LEED imaging. The LEED IV plug-in option automatically tracks the evolution of the Low Energy Electron Diffraction pattern to obtain Intensity versus accelerating Voltage curves. In addition, acquire a movie of the entire IV acquisition for future playback and analysis.



Designed by k-Space engineers to integrate seamlessly into the kSA 400 system, the LEED IV plug-in option combines a kinematic scattering algorithm for tracking and a 16-bit D/A controller board with cables for LEED energy control. For the scientist who needs IV data, the LEED IV plug-in gives instant results at an affordable price.

Features

- Sophisticated tracking algorithm that uses kinematic scattering, intensity tracking, or both for accurate IV acquisition
- LEED IV acquisition mode includes detailed energy control and tracking data saved just like kSA 400's Scan Mode
- Standard 8-bit dynamic range, or optional 10/12-bit dynamic range and high S/N ratio digital cameras
- Complete exposure control and frame averaging, yielding the highest quality quantitative images for analysis



k-Space Associates, Inc. • 3623 W. Liberty Rd. • Ann Arbor, MI 48103 USA
Tel: (734) 668-4644 • Fax: (734) 668-4663 • requestinfo@k-space.com
www.k-space.com