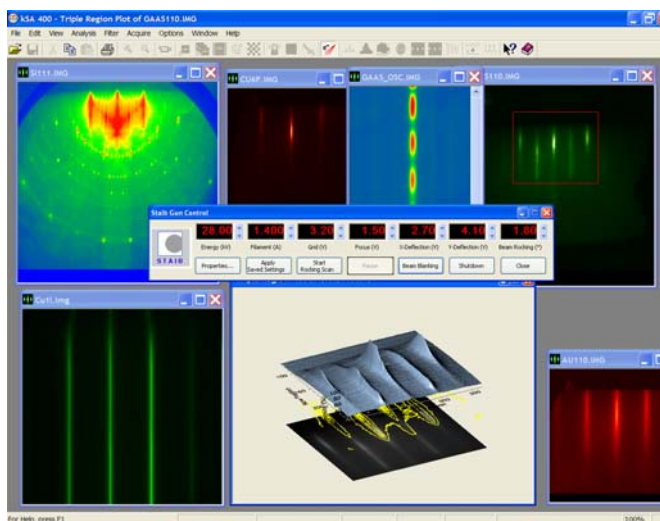


Electron Gun Control and Beam Rocking



The kSA 400 Electron Gun Control plug-in option allows for full control of electron guns. Store gun control settings and immediately ramp to them, fine tuning while simultaneously viewing the diffraction pattern and acquiring Reflection High Energy Electron Diffraction (RHEED) rocking curves—all with the click of the mouse.

Using a 16-bit D/A board for precise control, the Electron Gun Control plug-in generates a “front panel” control center for complete gun operation via the computer. Combined with the multi-threaded kSA 400 system, obtain complete gun control with simultaneous acquisition and analysis—*the ultimate in analytical RHEED.*



Features

- Supports *Staib Instruments*, *R-DEC Co. Ltd.*, and *Virotech Japan Co., Ltd.* lines of electron guns
- Integrated “front panel” for modifying electron gun settings while performing acquisition, analysis, or any other task
- 16-bit resolution of all electron gun control parameters and beam blanking on/off control
- Integrated, automated rocking curve via Energy-Resolved RHEED acquisition mode
- Simultaneous display of diffraction pattern and electron gun control settings
- Preset, user-defined gun control settings for immediate ramping to diffraction conditions
- Precise spot position maintenance through X and Y deflection 5th-order polynomial link to beam rocking (for *Staib* guns with beam rocking)



Get the most from your analytical RHEED system by maximizing the features of your electron gun with the kSA 400 Electron Gun Control plug-in.

Please contact us for pricing and details.



k-Space Associates, Inc. • 3623 W. Liberty Rd. • Ann Arbor, MI 48103 USA
Tel: (734) 668-4644 • Fax: (734) 668-4663 • requestinfo@k-space.com
www.k-space.com